



# MONTHLY MEMBERSHIP PROGRESS REPORT

District 5M 13

Results as of: 2/28/2015

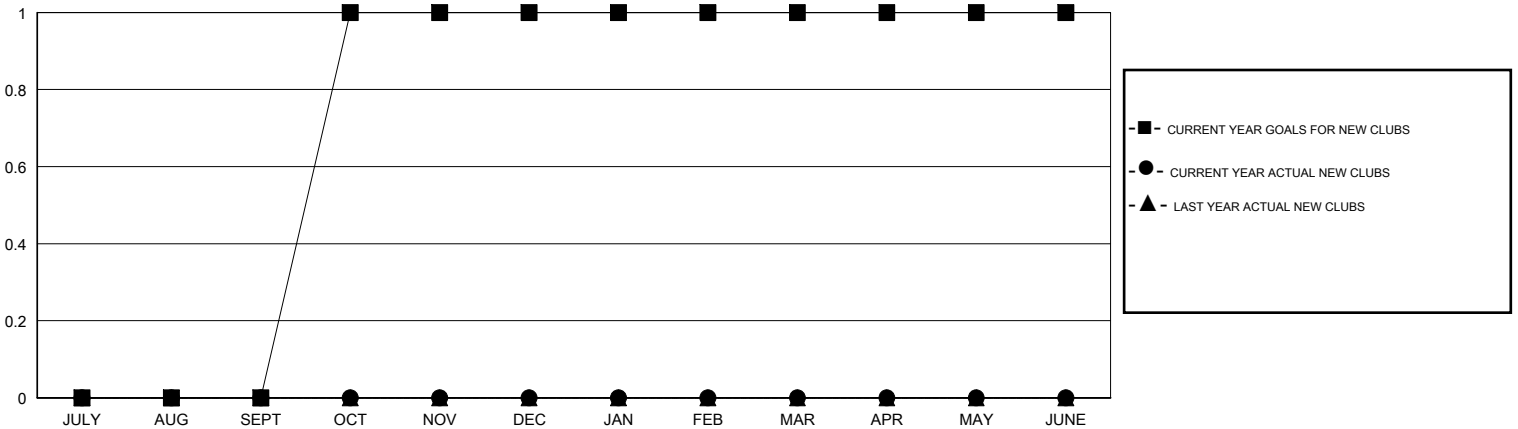
GMT: DENNIS STEVENSON

LOCATION MANITOBA

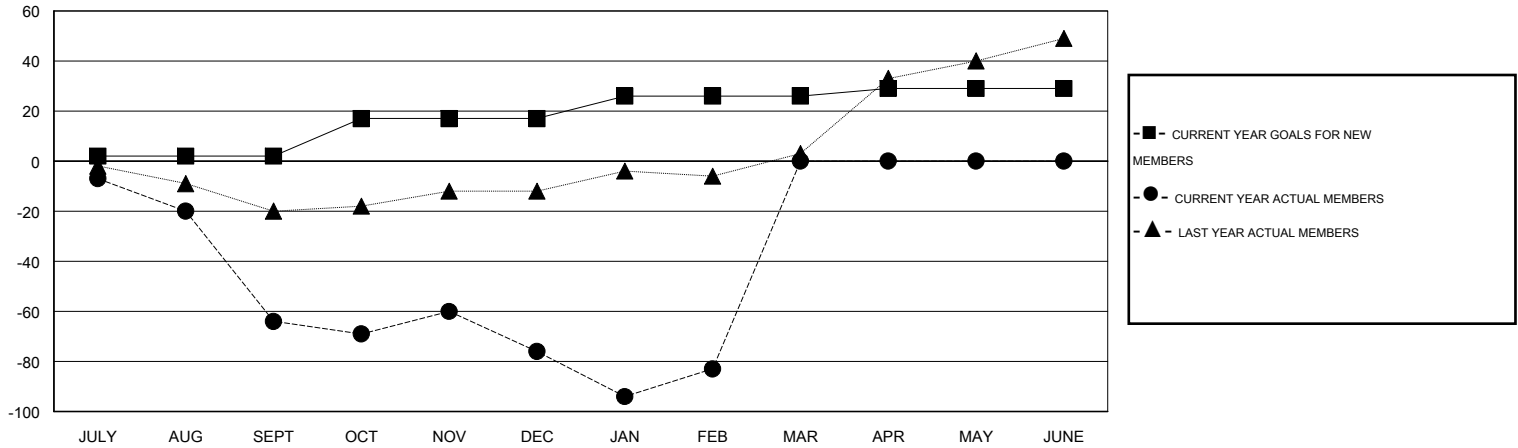
GMT CA 2

Clubs					Members				
RESULTS FOR 2014-2015					RESULTS FOR 2014-2015				
QUARTER	NEW CLUB GOAL	NEW CLUBS	DROPPED CLUBS	NET GAIN/LOSS	QUARTER	NEW MEMBER GOAL	CHARTER AND NEW MEMBERS ADDED	DROPPED MEMBERS	NET GAIN/LOSS
JULY/AUG/SEPT	0	0	2	-2	JULY/AUG/SEPT	2	3	67	-64
OCT/NOV/DEC	1	0	1	-1	OCT/NOV/DEC	15	24	36	-12
JAN/FEB/MAR	0	0	2	-2	JAN/FEB/MAR	9	22	29	-7
APR/MAY/JUNE	0	0	0	0	APR/MAY/JUNE	3	0	0	0

GOALS AND ACTUAL NEW CLUBS CUMULATIVE



GOALS AND ACTUAL MEMBERS CUMULATIVE



DROPPED CLUBS: 5	23 CLUBS OF 61 ADDED 1 OR MORE NEW MEMBERS	<b>GENDER DISTRIBUTION</b> MALE 935 (77.15%) FEMALE 277 (22.85%)
<b>DROPPED MEMBERS</b> DECEASED 10 CLUB CANCELLED 22 OTHER 100 TOTAL 132	<a href="#">CLICK HERE FOR HEALTH ASSESSMENT DATA</a>	FAMILY UNIT MEMBERS 195 HEAD OF HOUSEHOLD 97 NON-HEAD OF HOUSEHOLD 98